



Finished size: 8½" × 6" × 1½"

## MATERIALS

- 18" × 22" rectangle kraft·tex
- Bone folder
- 14mm or 18mm magnetic snap closure
- Paper clips or small binder clips
- 2 rectangle rings 1½"-wide for straps
- Rotary cutter, ruler, cutting mat, craft knife / rotary point cutter, or scissors (see Tips below for specific recommendations)

## Cutting and Assembly

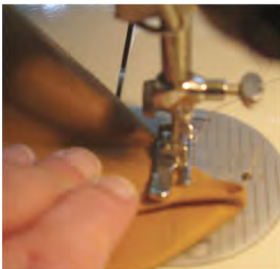
1. Print and cut out the Bag Body and Inner Bag Flap templates.
2. Trace the templates onto kraft·tex and cut out. Cut 3 strap rectangles 1¼" × 18".

**TIPS** For improved cutting accuracy, use a see-through ruler and a rotary cutter on the long lines; a small (28mm) rotary cutter—*slowly*—on the curved lines; and an Olfa rotary point cutter or a craft knife in the tight spots, rather than plain scissors. As with paper, keep a cutting blade and a sewing machine needle dedicated to kraft·tex.

3. With the paper pattern as a guide and using the pointed end of a bone folder, score the front and back of the bag body along the 6 marked score lines. Fold on the score lines both ways—with right sides together and wrong sides together. Use the edge of the bone folder to impress the folds by stroking back and forth with light pressure along the fold lines each time you fold.
4. Mark the snap locations on the right sides of the bag front and inner flap.
5. Apply the lower (concave) snap component to the right side of the bag front.
6. Apply the upper (convex) snap component to the right side of the inner flap.



7. Fold the bag body right sides together, matching the side seams. The side seams begin at the top of the ring tabs (see the gray-shaded areas on the pattern) and end at the center of the bag bottom at the dot. Gently crease across the bottom only as far as you must to enable stitching the side seams.
8. Sew the side seams, using a stitch length of approximately 8 stitches per inch, with ¼" seam allowances. Press the seam allowances open with the bone folder.
9. Pinch the bottom of a side seam and the bag bottom together so that the side seam runs down the center, facing you. The bag forms a triangle where the side and bottom meet. Measure approximately ¾" from the tip, mark it, and stitch across the point. Trim the point. Repeat with the other side.
10. Turn the bag right side out.



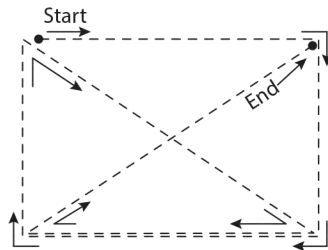
**TIP** New kraft·tex is a little stiff, but you can scrunch it at will to turn the bag right side out, creating the first of many wrinkles that will patinate your bag over time. Handle the corners gently.

11. Finger-press along all the score lines to firm up the shape and along the stitched seams to keep the seam allowances open.
12. Using the inner flap, connect the 2 snaps and line up the bag flap with the inner flap. Clip the edges of the flaps together.

**TIP** Temporarily join kraft·tex pieces with paper clips, bulldog clips, binder clips, bobby pins, or even magnets. Pins create permanent holes.

13. Using a rectangle ring, turn the ring tab (gray-shaded areas on the pattern) over the ring and to the wrong side of the bag. Clip the tab into place, with the side seam allowances open. Repeat.

14. Stitch to create an "X-box" on a folded-over tab, and continue stitching onto and around the flap, joining the inner flap to the bag flap, and ending by stitching a second X-box on the other folded-over tab.

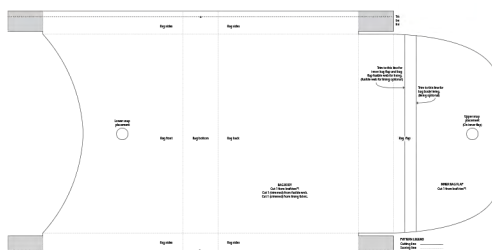


X-box stitching

15. Sew the short ends of the 1¼" × 18" strap rectangles together by overlapping one strap end with another by 1" and then stitching together with an X-box. Repeat to add the third strap.

**TIP** The strap for this bag, when assembled and attached, is approximately 50" long for a cross-body length. If you prefer a shorter or longer strap length, plan and adjust accordingly.

16. Turn one strap end over a rectangle ring by 1". Secure by stitching an X-box. Repeat with the other strap end and rectangle ring.



## Options



- Straps can be made from fabric, canvas or other materials.
- Make a grocery bag with a pocket
- Try using 1½" D-rings and 2 swivel hooks for removable straps.



Add a colorful fabric lining to the inside of the bag. Using fusible web, fuse lightweight fabric in place before the bag is cut out.



Use a decorative punch for a pretty pattern along the flap then fuse fabric to the wrong side of the inner flap to highlight the punched openings, or leave it plain.



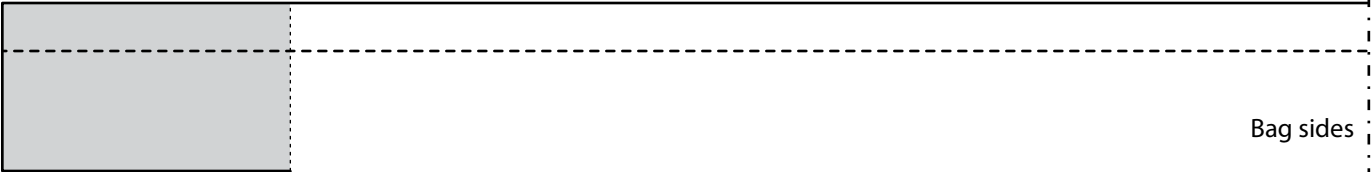
Cut and fuse fabric trims to the outside of the bag.



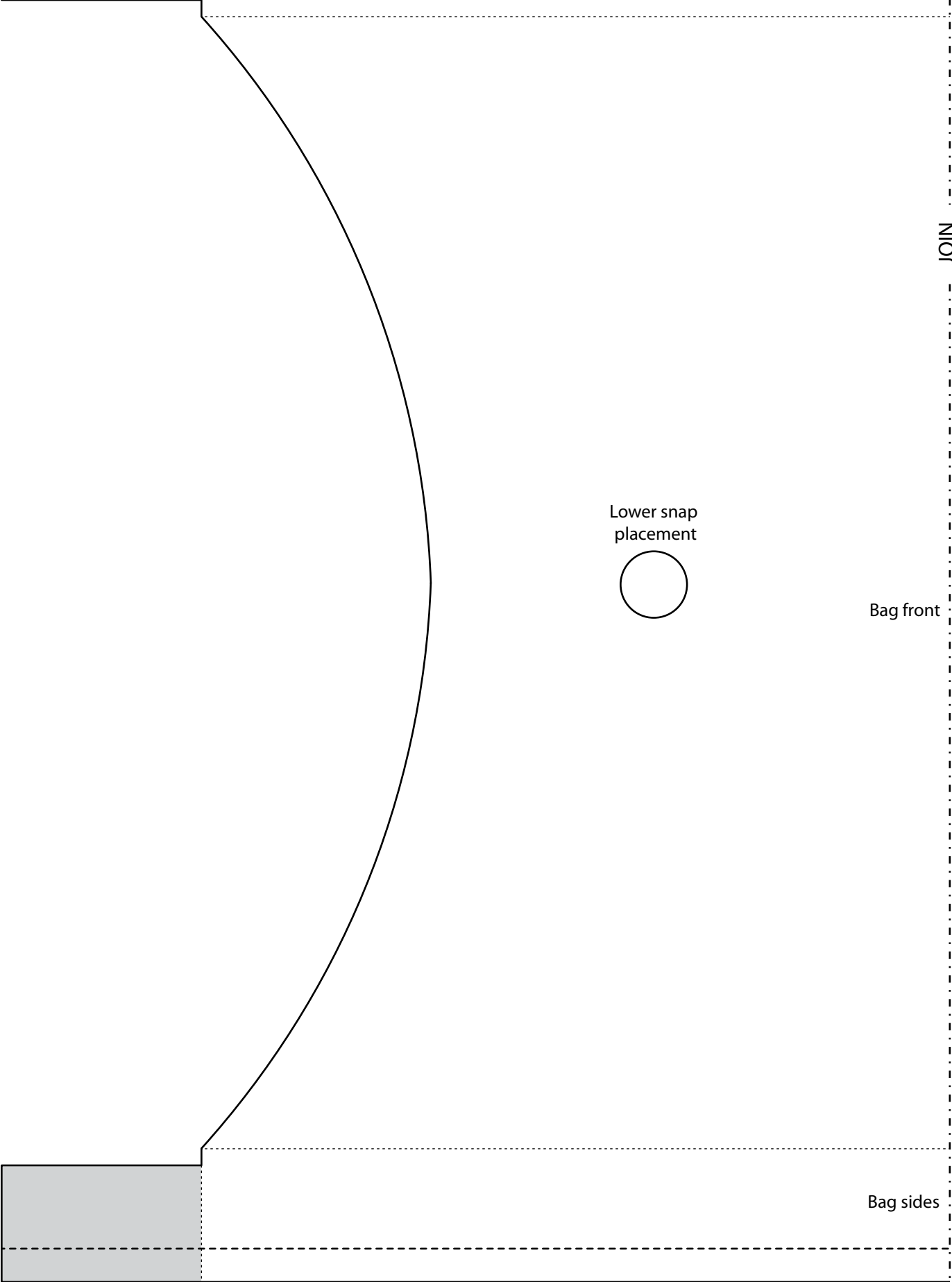
Print directly from an inkjet printer onto kraft·tex. Note: not all inkjet printers can handle the thickness. Test your printer and refer to the owner's manual for printing on heavyweight substrates.



Using TAP, Transfer Artist Paper (by C&T Publishing), print an image then apply to the front of the bag. Remember to reverse the image before printing on TAP.

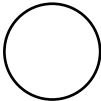


Bag sides



JOIN

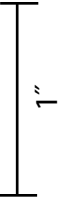
Lower snap  
placement



Bag front



Bag sides



JOIN



Bag sides

Bag bottom

Bag back



Bag sides

BAG BODY

Cut 1 from kraft·tex™.

Cut 1 (trimmed) from fusible web. *See options.*

Cut 1 (trimmed) from lining fabric. *See options.*

1"

JOIN

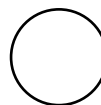
Trim away all four gray areas  
before cutting fusible web for  
lining (lining optional).

Trim to this line for  
inner bag flap and bag  
flap fusible web for lining.  
(fusible web for lining optional)

Trim to this line for  
bag body lining.  
(lining optional)

Bag flap

Upper snap  
placement  
(On inner flap)



INNER BAG FLAP  
Cut 1 from kraft·tex™.

PATTERN LEGEND

Cutting line —————  
Scoring line .....  
Stitching line - - - - -